

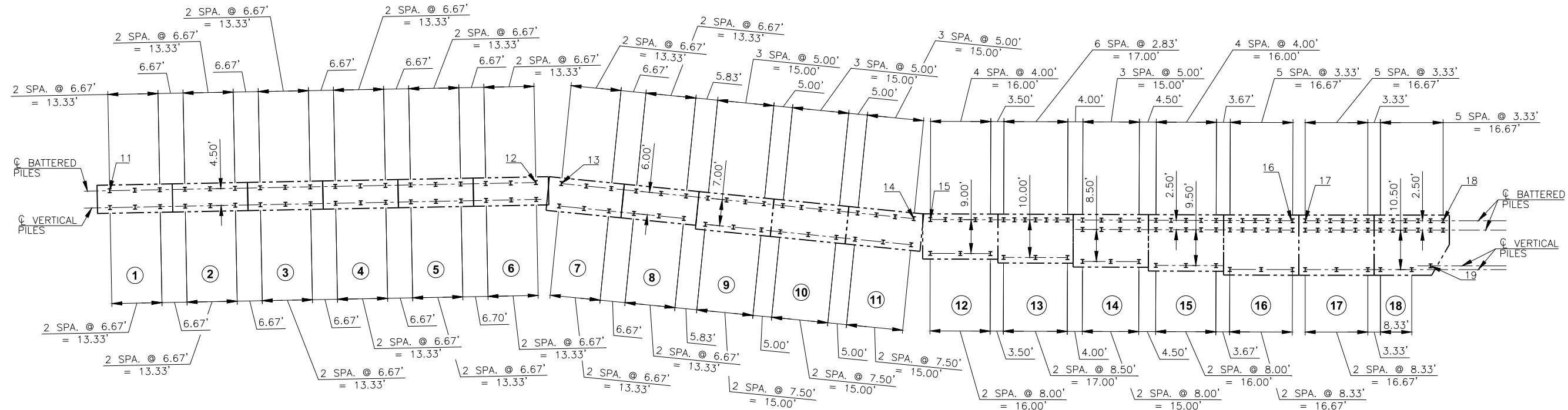
DESCRIPTION	REVISIONS	DATE

159+00

160+00

161+00

162+00

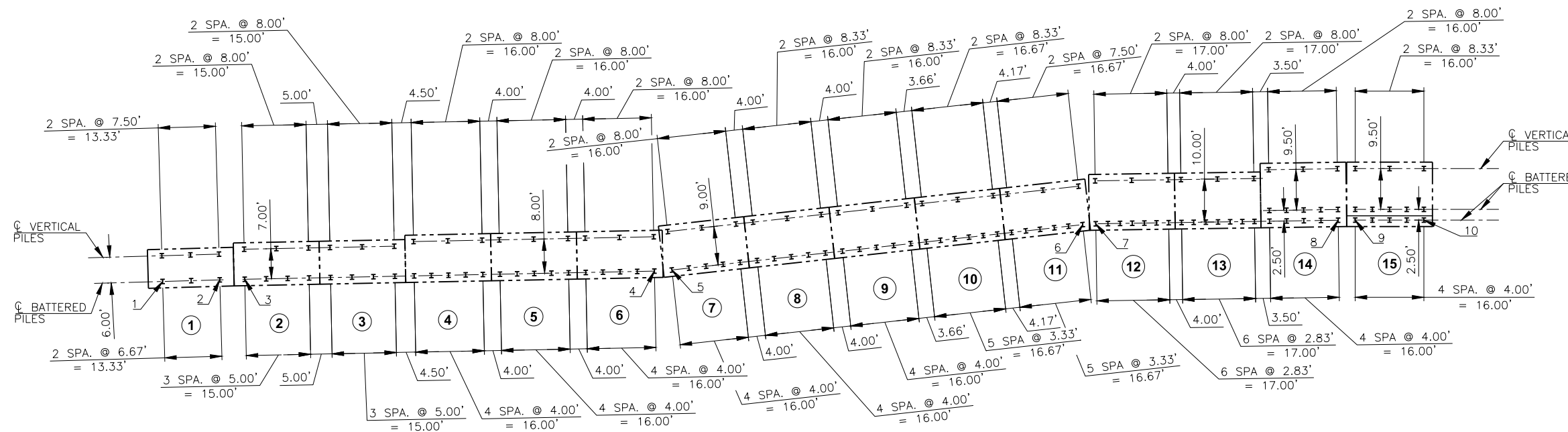


RETAINING WALL NO. 3

C.R.L. & P.G.L. OKLAHOMA CITY BOULEVARD
CURVE #1

C.R.L. & P.G.L. OKLAHOMA CITY BOULEVARD
S 80°17.4'66" E

PT STA. 161+14.44



RETAINING WALL NO. 1

RETAINING WALL PILES SHALL BE ORIENTED SUCH THAT THE FACE OF THE WEB IS PERPENDICULAR TO THE FRONT FACE OF THE RETAINING WALL.

STATION CALL OUTS FOR PILES

POINT	STATION	OFFSET
1	158+76.25	72.61' RT.
2	158+89.69	72.59' RT.
3	158+95.57	72.60' RT.
4	159+91.88	72.60' RT.
5	159+96.00	72.39' RT.
6	160+92.58	62.61' RT.
7	160+95.66	62.42' RT.
8	161+52.28	61.61' RT.
9	161+56.27	61.58' RT.
10	161+72.27	61.58' RT.
11	158+83.82	72.70' LT.
12	159+96.20	72.57' LT.
13	160+02.91	72.21' LT.
14	160+95.82	62.17' LT.
15	161+00.17	61.92' LT.
16	161+96.07	61.59' LT.
17	161+99.73	61.58' LT.
18	162+36.40	61.58' LT.
19	162+33.07	49.58' LT.

DESIGN	B.J.K.	CROSSTOWN BOULEVARD EASTBOUND OKLAHOMA COUNTY OVER CLASSEN BLVD.
DRAWN	R.A.P.	
CHECKED	B.J.K.	
APPROV.	T.A.C.	
SQUAD	CEC	
SUBSTRUCTURE LAYOUT RETAINING WALL NO. 1 AND 3		
JOB PIECE NO. 17428(88) SHEET NO. 128		